
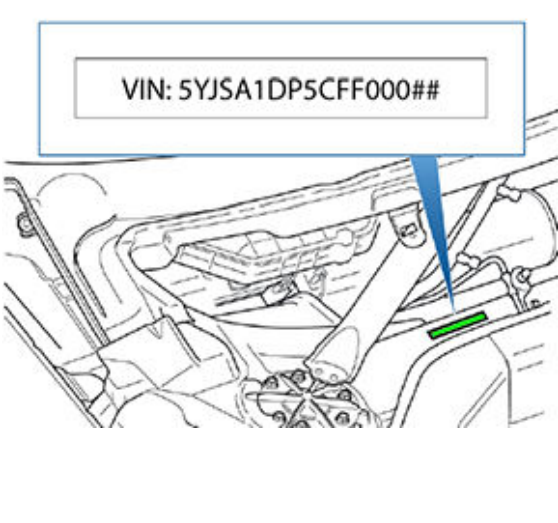



Vehicle Identification Number (VIN)

VIN Locations

The Vehicle Identification Number (VIN) is visible in 3 locations:

The bottom corner of the driver's side of the windshield	On the front crossmember, beneath the rear center underhood apron	On the driver's side door jamb
 A photograph of a dark-colored Tesla Model S. A blue arrow points to the bottom right corner of the windshield, where a white box contains the text "VIN: 5YJSA1DP5CFF000##".	 A technical line drawing of the front engine compartment. A blue arrow points to the front crossmember, where a white box contains the text "VIN: 5YJSA1DP5CFF000##".	 A photograph of the driver's side door jamb of a Tesla Model S. A blue arrow points to a white label on the door frame. The label contains the text "MFD BY TESLA MOTORS, INC." and "VIN: 5YJSA1DP5CFF00000".

Note: The above images of the VIN location on the windshield and door jamb show LHD vehicles. The locations are mirrored on RHD vehicles.

Note: Model S in China have the VIN located on the passenger's side door jamb instead of the driver's side.

Note: When corresponding with Tesla, always include the VIN (and the drive unit serial number, if necessary).

2012-2014 VIN Decoders

Digits 1-3

2012/2013: World Manufacturing Identifier	2014: World Manufacturing Identifier
5YJ = Tesla	5YJ = Tesla

Digit 4

2012/2013: Series Name	2014: Series Name
S = Model S	S = Model S

Digit 5

2012/2013: Body Type	2014: Body Type
A = 5 door Hatchback LHD RWD	A = Hatchback 5 door / LHD
B = 5 door Hatchback LHD AWD	B = Hatchback 5 door / RHD
C = 5 door Hatchback RHD RWD	
D = 5 door Hatchback RHD AWD	

Digit 6

2012/2013: Restraint Systems	2014: Restraint Systems
1 = Manual Type 2 USA seat belts, dual front airbags, front/rear side airbags, knee airbags	1 = Type 2 Manual seatbelts (FR, SR*3) with front Airbags, PODS, side Inflatable restraints, Knee Airbags (FR)
2 = Manual Type 2 EU seat belts, dual front airbags, front/rear side airbags, knee airbags	2 = Type 2 Manual seatbelts (FR, SR*3) with front Airbags, side Inflatable restraints, Knee Airbags (FR)
	3 = Type 2 Manual seatbelts (FR, SR*3) with front Airbags, side Inflatable restraints

Digit 7

2012/2013: Charger Type	2014: Battery Type
A = 10 kW Charger	H = Lithium-Ion Battery - High Capacity
B = 20 kW Charger	S = Lithium-Ion Battery - Standard Capacity
C = 10 kW Charger, w/ DC fast charge	
D = 20 kW Charger, w/ DC fast charger	

Digit 8

2012/2013: Motor / Drive Unit & Battery Type	2014: Motor Drive Unit
C = Base A/C Motor, Tier 2 battery (31-40 kWh)	1 = Single Motor - Three Phase A/C Induction
G = Base A/C Motor, Tier 4 battery (51-60 kWh)	

2012/2013: Motor / Drive Unit & Battery Type	2014: Motor Drive Unit
N = Base A/C Motor, Tier 7 battery (81-90 kWh)	
P = Performance A/C Motor, Tier 7 battery (81-90 kWh)	

Digit 9

The 9th digit is a *check digit*. A *check digit* is the result of a mathematical formula based on all other digits in the VIN. It is designed to lower the likelihood of errors and fraud. All vehicles produced in North America are required to have a check digit as the 9th digit of the VIN.

2012/2013: Check Digit	2014: Check Digit
?	?

Digit 10

2012/2013: Model Year	2014: Model Year
C = 2012	E = 2014
D = 2013	

Digit 11

2012/2013: Plant of Manufacture	2014: Plant of Manufacture
F = Fremont, CA, USA	F = Fremont, CA, USA

Digit 12

2012/2013: Production Sequence	2014: Production Sequence
A = Alpha Prototype	A = Alpha Prototype
B = Beta Prototype	B = Beta Prototype
F = Founder Series	F = Founder Series
P = Production	P = Production
R = Release Candidate	R = Release Candidate
S = Signature Series	S = Signature Series

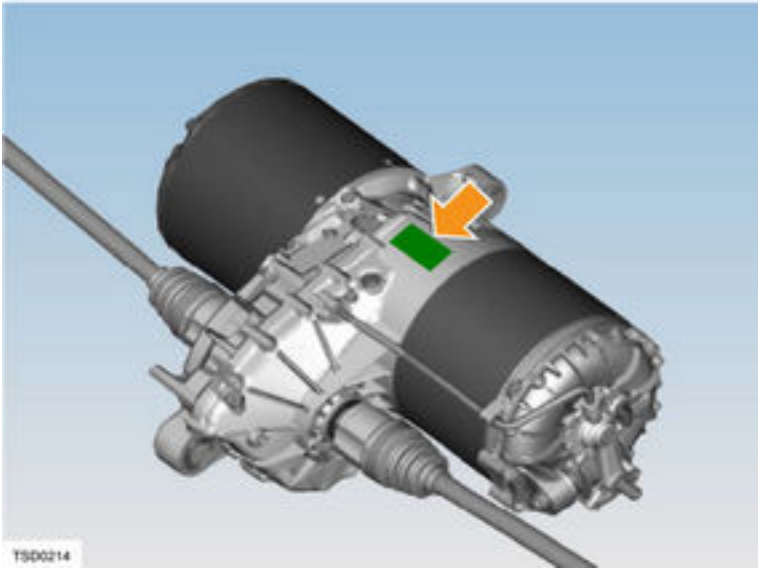
Digits 13-17

Tesla uses sequential numbers starting with 00001 to represent the production sequence of the vehicle. The Production Sequence numbering does not start at 00001 with each new model year. Rather, the Production Sequence number for the first car of a given model year will be one more than the Production Sequence number of the last car of the previous model year. If Tesla builds more than 99,999 cars of a given model over the lifetime of that model, the next number after 99,999 will be A0,000, progressing through A9,999, then on to B0,000 and so on up to Z9,999 - but not using the letters I, O or Q.

Location of other identification numbers

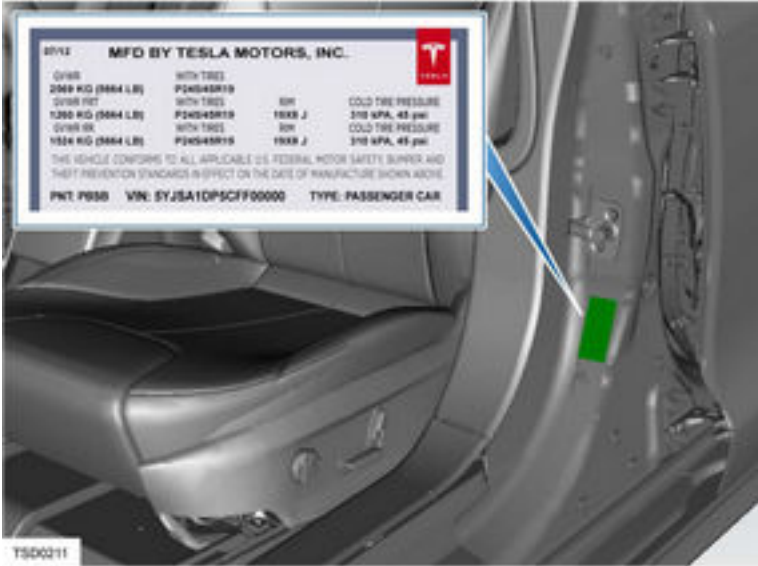
Drive unit number

From 2012 MY



Located on a label affixed to the motor.

Safety compliance certification label



The National Highway Traffic Safety Administration (NHTSA) regulations require that a safety compliance certification label is affixed to the vehicle. This is located on the driver’s side door jamb.

Note: Model S in China have the VIN located on the passenger’s side door jamb instead of the driver’s side.

Vehicle paint codes

The vehicle paint code is printed in the lower left hand corner of the safety compliance label. The label is attached to the driver side B post.

Paint Code	Paint Name	Solid / Metallic
PBCW	Catalina White	S
PBSB	Eclipse Black	S
PMAB	Sycamore Brown	M
PMMB	Pacific Blue	M
PMSG	Sequoia Green	M
PMSS	Starlight Silver	M
PMTG	Dolphin Grey	M
PPSR	Signature Red	Tricoat
PPSW	White Water Pearl	Tricoat
PMMR	Sunset Red	Tricoat